



Eurobodalla

Regional Hospital Development

Community Update
Tuesday 12 December 2022



ACKNOWLEDGEMENT OF COUNTRY

In the spirit of reconciliation Health Infrastructure acknowledges the Traditional Custodians of country throughout Australia and their connections to land, sea and community. We pay our respect to their elders past and present and extend that respect to all Aboriginal and Torres Strait Islander peoples today.

Housekeeping

- Today's webinar is being recorded
- We have allocated 20 minutes for Q&A at the end of the presentation
- You can type your questions into the Q&A chat box
- The raise hand and chat feature have been disabled
- Questions will be moderated and put to our panel at the end of the presentation.
- Turn on the Q&A feature to see questions
- If we don't get time for your question we will aim to answer it in our FAQs page of the project website: www.eurobodallahs.health.nsw.gov.au

Overview of session

- Welcome and introductions
- Project update
- Archaeological work
- Floor plans
- Virtual tour
- Questions
- Close



Your presenters today

- Matthew Malone, Senior Project Director, Health Infrastructure
- Orestes Lomis, Project Director, Health Infrastructure
- Paul Emmett, Architect, Conrad Gargett
- Louise McFadden, Project Lead – Manager, Southern NSW Local Health District

How to build a hospital

How to build a hospital

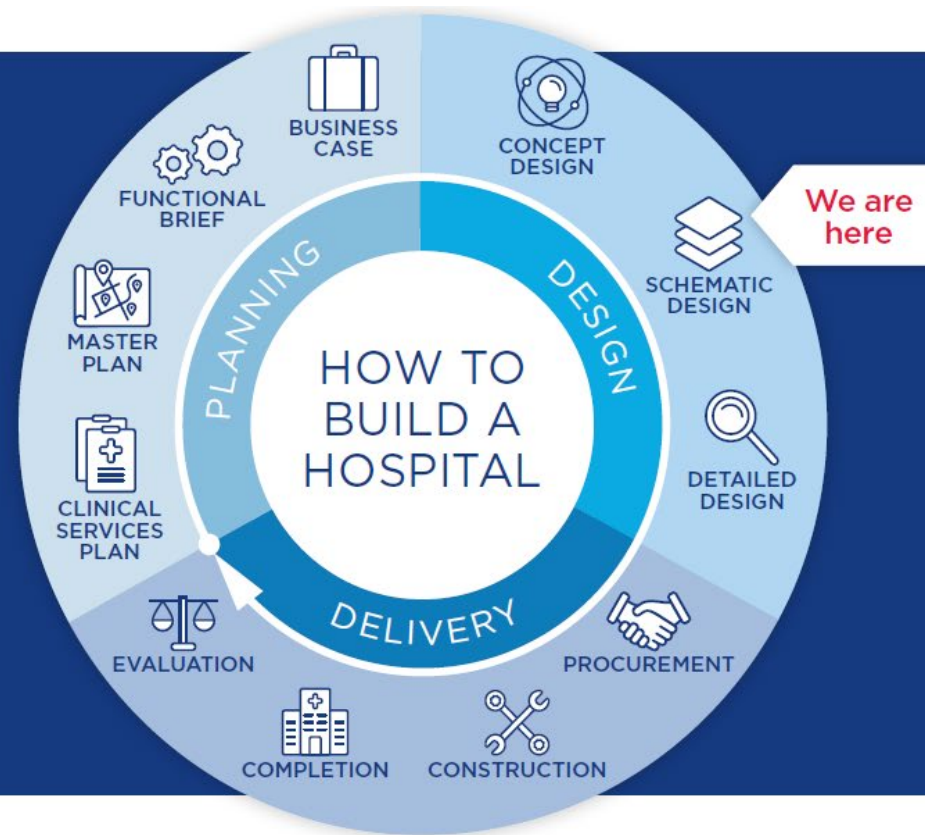
There are three distinct phases:

- planning
- design
- delivery

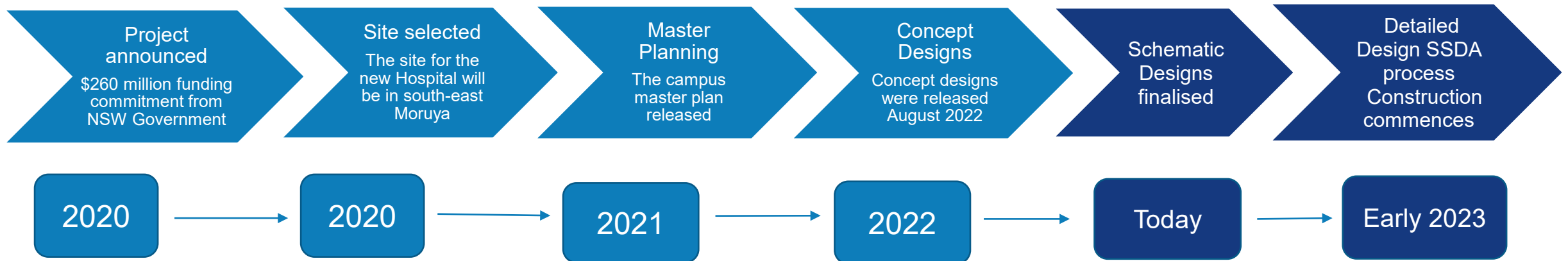
Each development is tailored to a community's unique needs.

Visit the Health Infrastructure website for more information:

www.hinfra.health.nsw.gov.au/our-business/how-to-build-a-hospital



Where are we up to?



The new Eurobodalla Regional Hospital will include:

- An emergency department
- An eight bed Intensive Care Unit (ICU) /Close Observation Unit (COU)
- Increased capacity for chemotherapy treatments
- Surgical and operating theatres
- Expanded medical imaging, including MRI
- Ambulatory care for community outpatient services
- Paediatric and maternity services - including inpatient beds
- Mental health beds for short term admissions, and
- Enhanced education and training facilities.

Key features of the new hospital and infrastructure

Larger than Moruya
and Batemans Bay
hospitals combined

Designed with capacity
to grow, as needs for
services evolve

Helipad to transport
patients requiring
specialist care to
hospitals in Sydney and
Canberra

Secondary access road
for emergency vehicles
if Princes Highway is
impassable

Will open with
expanded services and
Level 4 hospital

Primary access for all
public and hospital
vehicles via Princes
Highway

A pilot project for the
NSW Government
Architect's Connecting
with Country
Framework

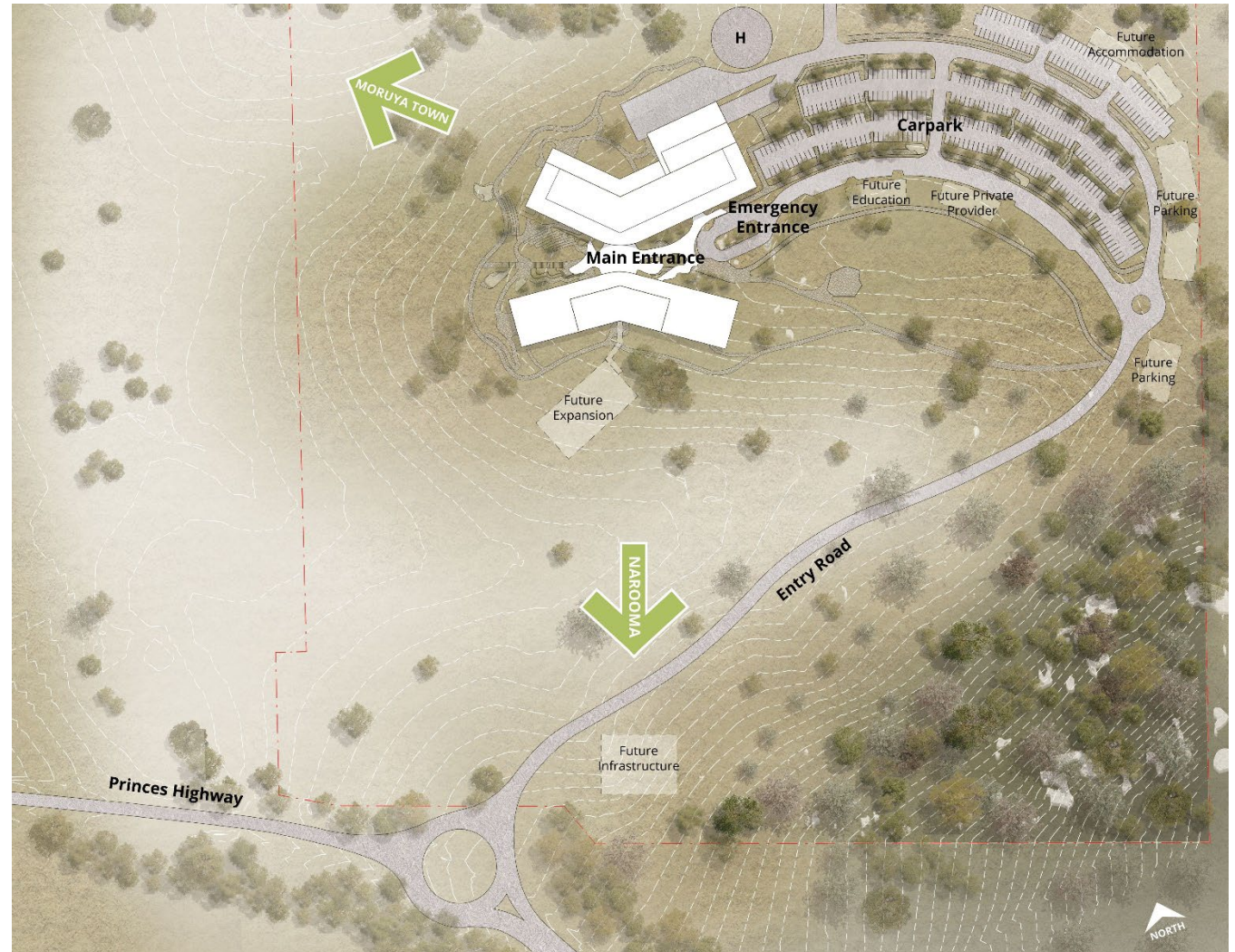
Involving professionals,
consumers and
communities in shaping
the new hospital

Site plan

Consultation held with community, consumers, incl. local Aboriginal groups, Transport for NSW and the Eurobodalla Shire Council.

Evaluated against a range of assessment criteria including:

- current and projected population growth areas
- flood and bushfire zones
- capacity for future expansion
- transport
- access to and from key infrastructure such as Moruya Airport and the planned Moruya Bypass.

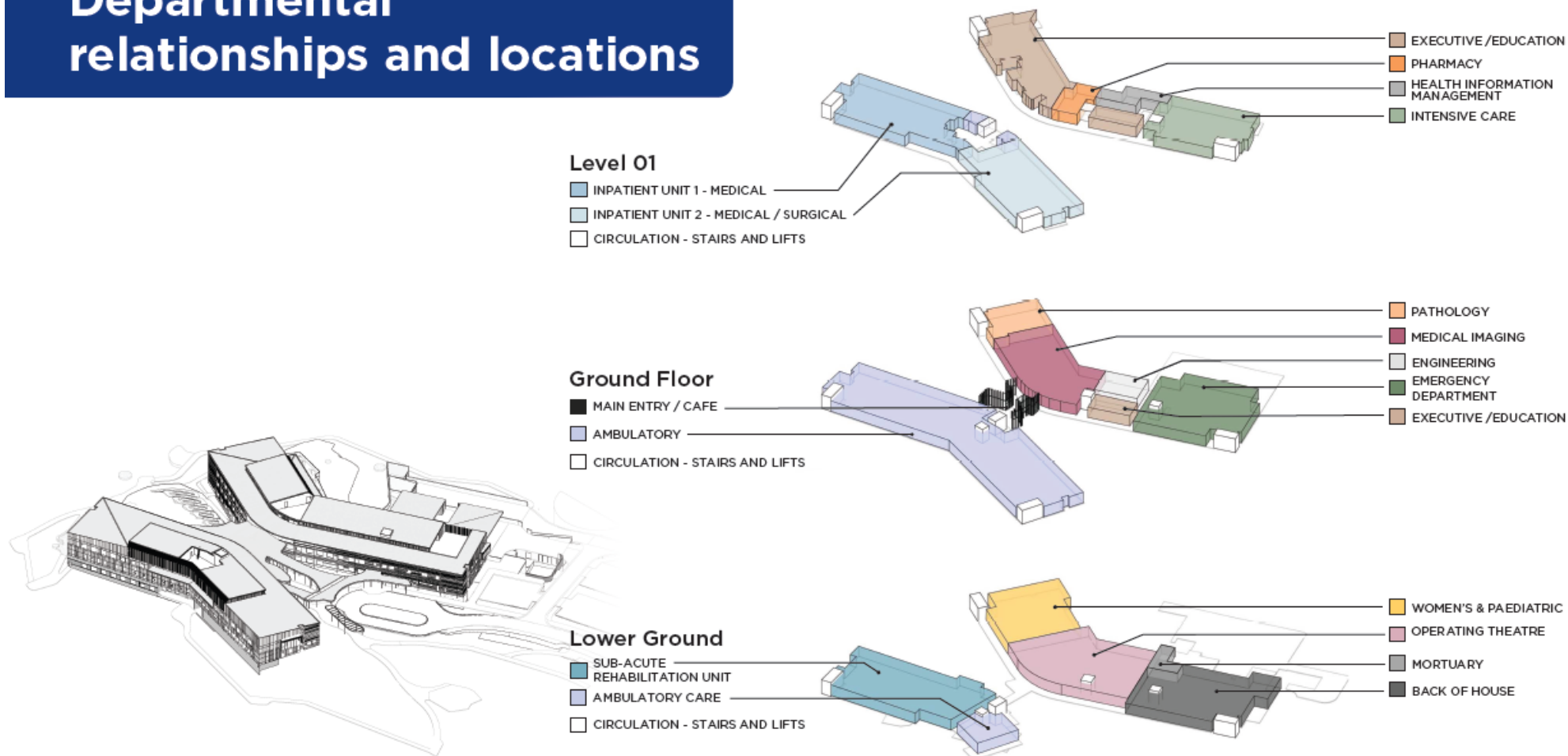


Connecting with Country



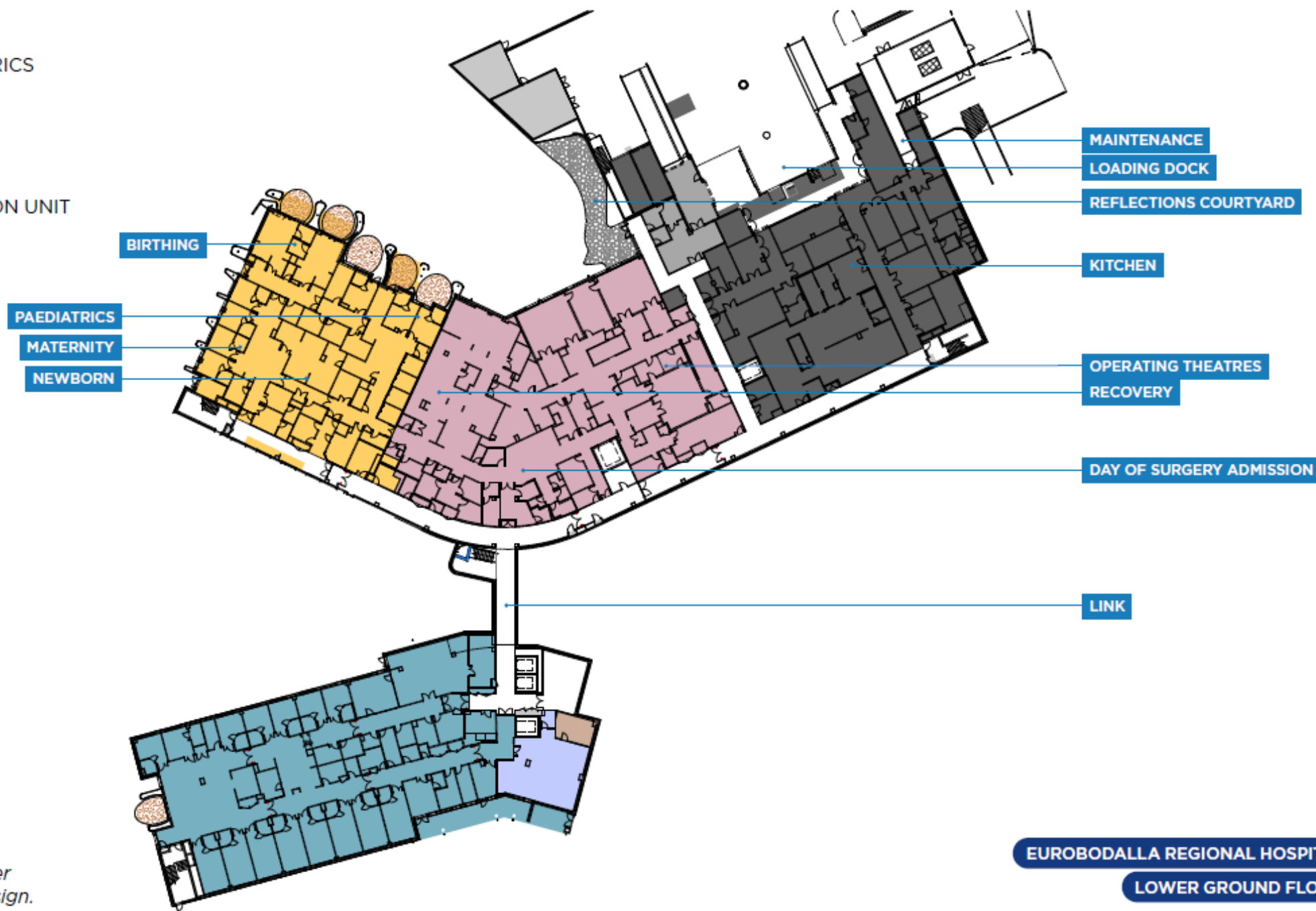
- Creating a place of healing and wellbeing for all.
- A pilot project for the NSW Government Architect's 'Connecting with Country' Framework.
- Seeking Aboriginal knowledge in design and in strategies to reduce the impacts of natural events.
- Includes use of local language, cultural health, wellbeing, and healing practices.
- Smoking ceremony and cultural burn undertaken on site in September 2022.
- Archaeological salvage process will be carried out to identify any Aboriginal objects or artefacts.
- Archaeologists work with Cobowra Local Aboriginal Land Council and other Registered Aboriginal Parties to undertake this work.

Departmental relationships and locations



LEGEND

- MATERNITY AND PAEDIATRICS
- OPERATING THEATRES
- MORTUARY
- BACK OF HOUSE
- SUB-ACUTE REHABILITATION UNIT
- COMMUNITY HEALTH

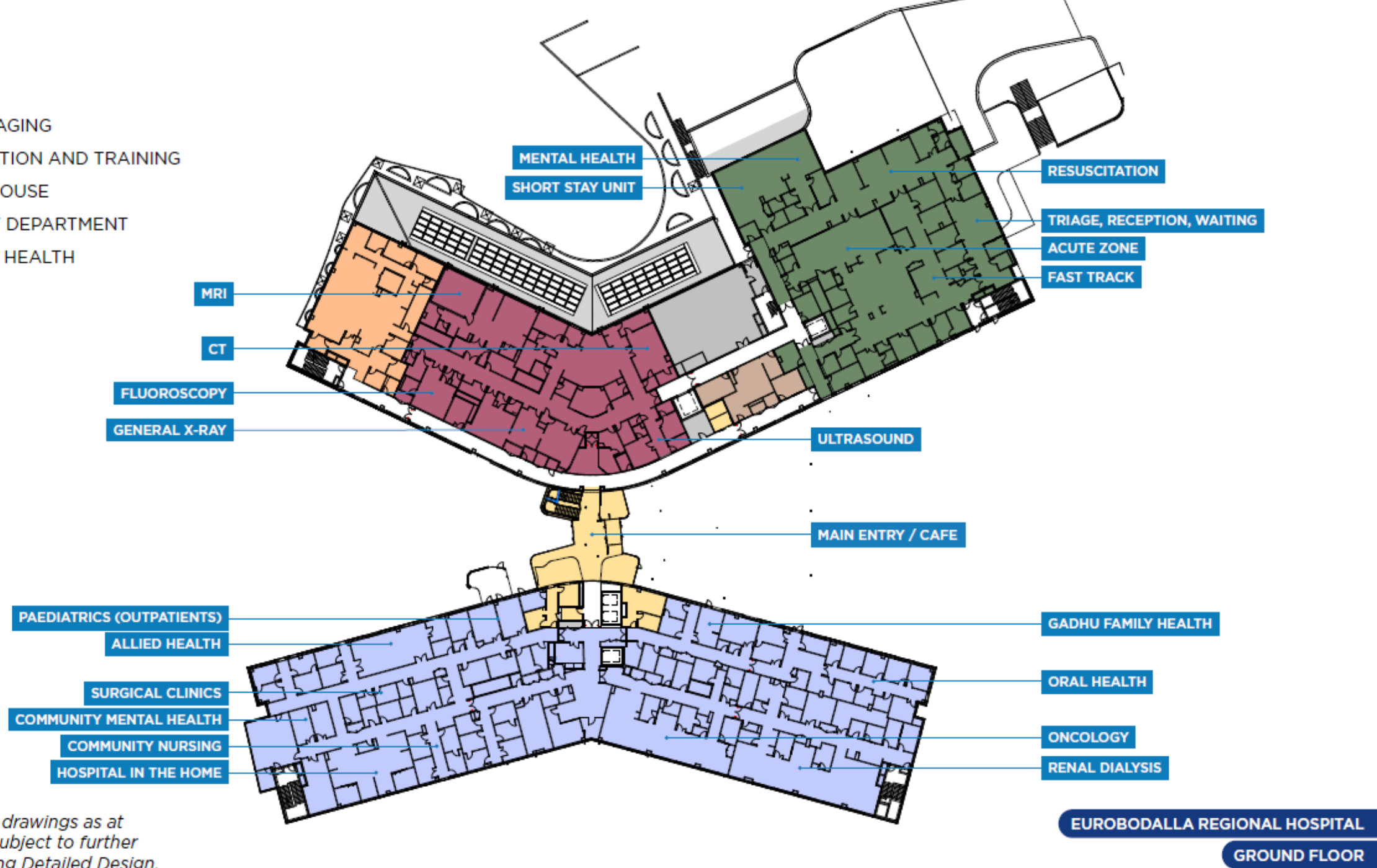


Schematic Design drawings as at November 2022, subject to further development during Detailed Design.

EUROBODALLA REGIONAL HOSPITAL
LOWER GROUND FLOOR

LEGEND

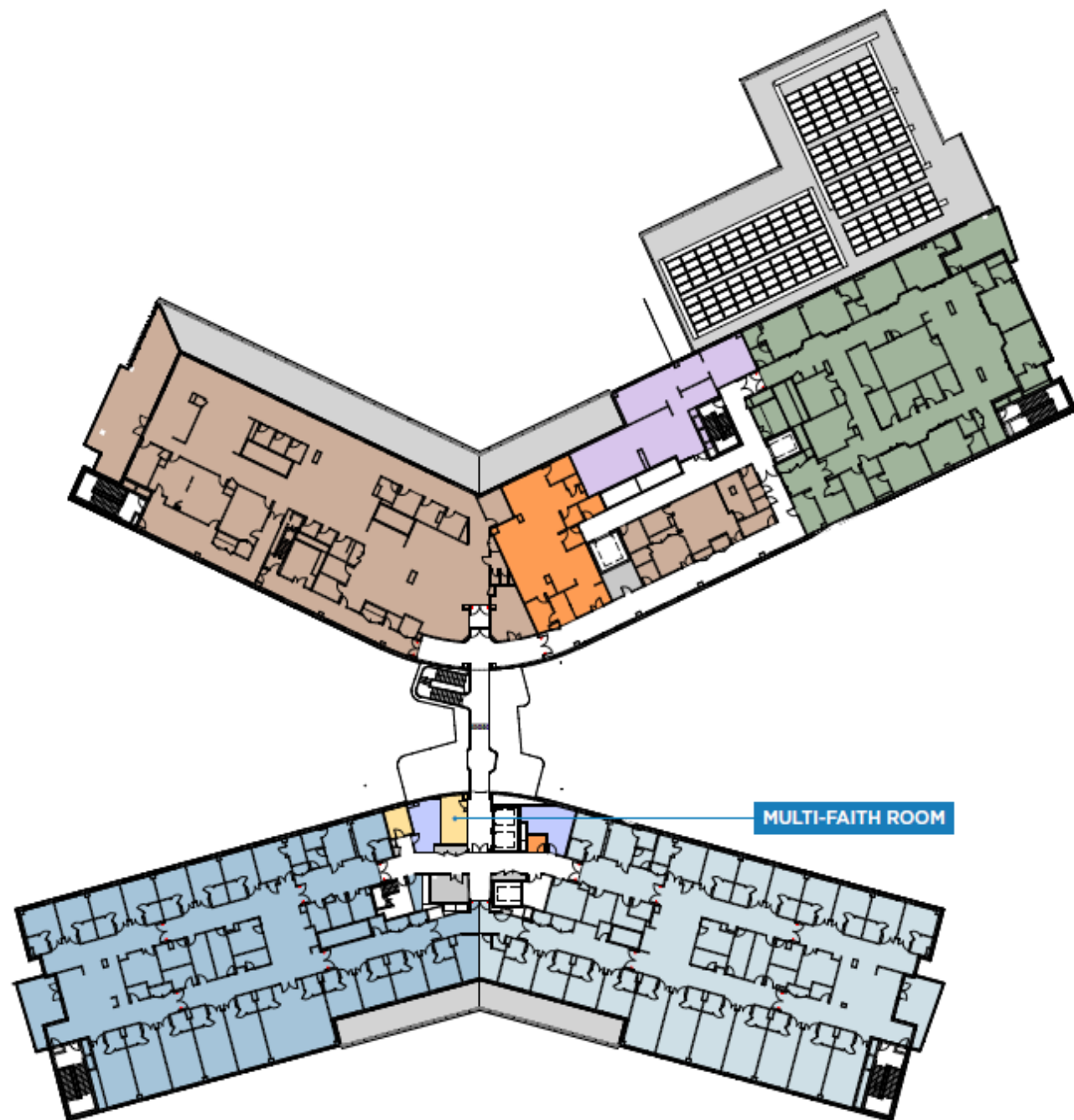
- PATHOLOGY
- MEDICAL IMAGING
- ADMINISTRATION AND TRAINING
- FRONT OF HOUSE
- EMERGENCY DEPARTMENT
- COMMUNITY HEALTH



Schematic Design drawings as at November 2022, subject to further development during Detailed Design.

LEGEND

- ADMINISTRATION AND TRAINING
- PHARMACY
- HEALTH INFORMATION MANAGEMENT
- INTENSIVE CARE UNIT
- COMMUNITY HEALTH
- FRONT OF HOUSE
- INPATIENT UNIT 1
- INPATIENT UNIT 2



Schematic Design drawings as at November 2022, subject to further development during Detailed Design.

EUROBODALLA REGIONAL HOSPITAL

LEVEL ONE



Questions?



Stay in touch

Email: HI-EurobodallaHospital@health.nsw.gov.au

Phone: 1300 391 949

Web: eurobodallahs.health.nsw.gov.au