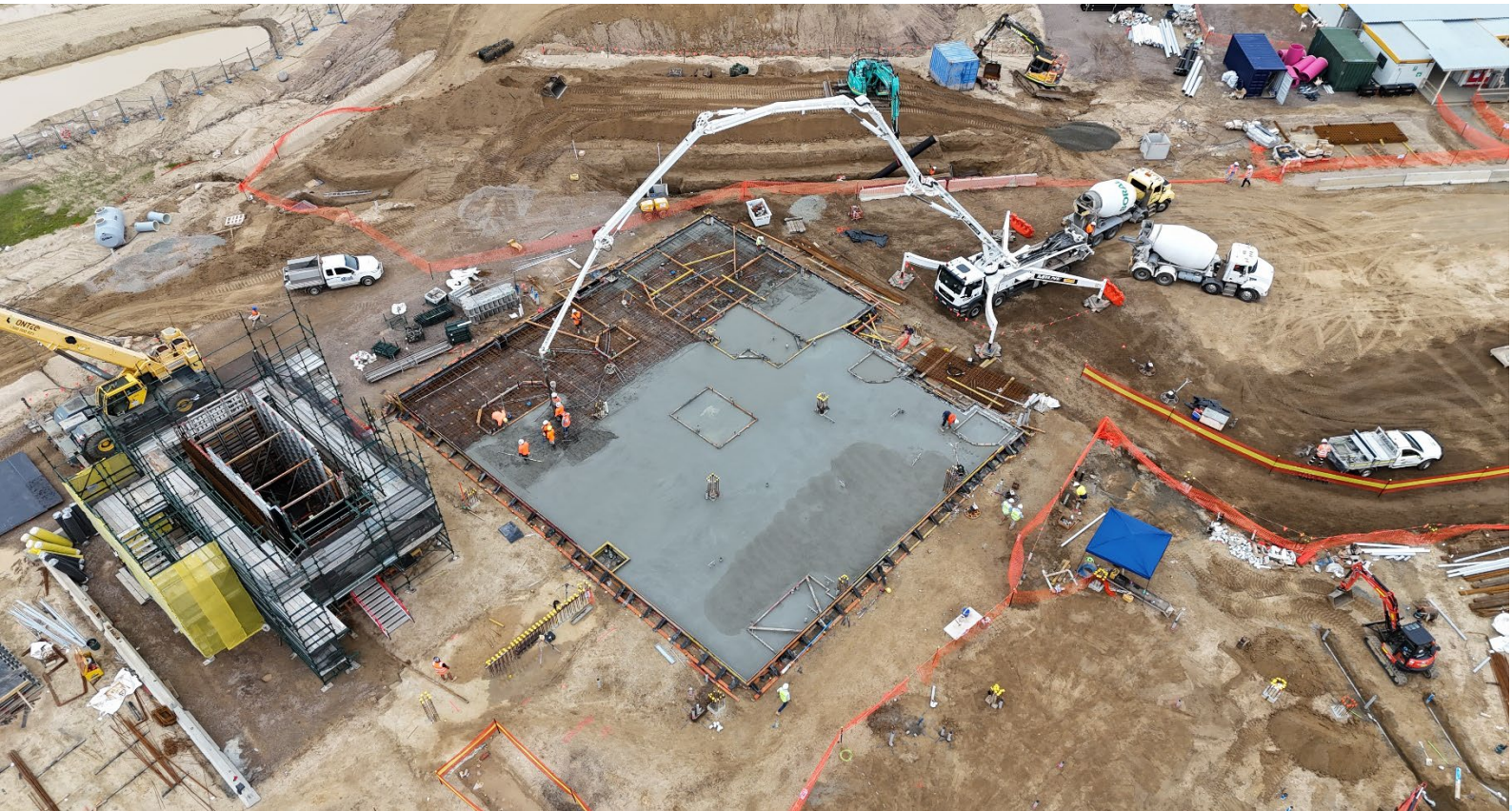


Project update

Eurobodalla Regional Hospital Batemans Bay Community Health

February 2025



Eurobodalla Regional Hospital moves ahead with first concrete pour

Construction of the new \$330 million Eurobodalla Regional Hospital is on track, with the first concrete pour complete and work to build a new roundabout on the Princes Highway set to start in the coming months.

The new concrete slab forms part of the lower ground floor of the north-western corner of the hospital which will include the first paediatric department in the region and a contemporary maternity unit, supporting high-quality, patient-centred care.

The new maternity department has been

designed with extensive input from staff and the community, and will offer a calming, modern and culturally safe environment for women and families.

[View the latest progress photos from the site and find out more on the Eurobodalla Regional Hospital website.](#)

Crane arrives on site

A large mobile crane has arrived on site to support the construction of the new hospital.

With a maximum height of just over 70 metres, the crawler crane can lift up to 110 tonnes and will be used to carry a range of heavy building materials required for construction of the new hospital.

Unlike a traditional tower crane, which is fixed in place, a crawler crane moves on tracks, allowing greater flexibility around the building site.

The crawler crane will enable efficient access and movement of materials across the large footprint of the new Eurobodalla Regional Hospital site.



Help us name the Eurobodalla Regional Hospital crane

Calling all creative primary school children from across the Eurobodalla!

We need some help naming the crane that's helping to build the new Eurobodalla Regional Hospital.

Come up with a clever name and you could win a prize and the glory of seeing your name idea on a banner on the crane.



The winning entry will win an iPad and the name will be displayed on the crane. 10 runners up will receive Lego packs.

Simply tell us what you would name the crane and why, and colour in your entry form.

Visit **[Eurobodalla Regional Hospital website](#)** for all the T&Cs and to download your entry form.

Competition closes **6pm, Tuesday 25 March 2025.**

Batemans Bay Community Health update

Planning for the new Batemans Bay Community Health facility is nearing completion.

In November last year, the project's Review of Environmental Factors (REF) was placed on public exhibition.

As part of the public exhibition, the REF report which was prepared to assess the potential benefits and environmental impacts of the project, was available for feedback. A response to submissions report is underway and will be published in the coming weeks.

The REF report is available on Health Infrastructure's website:

www.hinfra.health.nsw.gov.au/projects/on-exhibition.

The main works construction tender was also released in November 2024.

Construction is expected to start in 2025 following the appointment of a contractor and pending planning approval. The project team will continue to update the community and stakeholders as the project progresses.

Further information about the project is available on the **Batemans Bay Community Health project website**.



The new Batemans Bay Community Health will provide a range of services such as:

- Allied Health
- Child, Youth and Family Services
- Women's Health
- Sexual Health
- Community nursing and wound management
- Palliative care
- Aboriginal Health
- Community Mental Health and Drug & Alcohol
- Specialist Outpatient Clinics
- Pathology

Roundabout construction works coming up

To support future access to the new hospital, a new roundabout will be constructed on the Princes Highway.

Construction of the new roundabout is expected to commence in coming months.

Further information will be provided to the community ahead of works starting.

How will the work affect you?

During the construction of the roundabout, there will be changes to traffic arrangements on the Princes Highway, including a reduced speed limit and additional signage.

We encourage all road users to follow the new speed limits and traffic signs to ensure everyone's safety. Your cooperation is greatly appreciated.

Keeping you informed

If you'd like more information or have any questions, please contact the project team via email at HI-EurobodallaHospital@health.nsw.gov.au or call 1300 391 949.